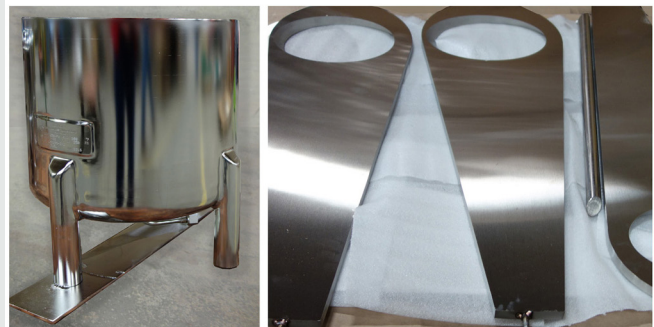
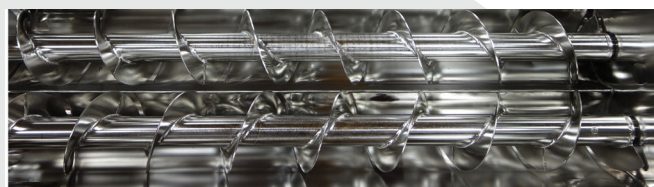


# ELECTROPOLISHING SERVICES



## Contact

David Foulkes  
920.356.7345

david.foulkes@apachestainless.com

## Federal Spec B-912

**Electropolishing** is an electro-chemical process that removes surface material from stainless steel. The process starts with an immersion of the component into a controlled bath of electrolyte that is charged with a DC power supply.

- Mirror finish
- Dramatically resist corrosion due to a formation of a protective surface oxide layer rich in chromium
- Electropolishing provides exceptional release properties with the highest resistance to bacterial attachment in sanitation performance
- Tank 1 Capability: 7.8' W x 5.9' H x 5.9' D
- Tank 2 Capability: 14.5' W x 5.9' H x 5.5" D
- Large custom rolling
- (2) 10,000 Watt Rectifiers
- (1) 2000 Watt Rectifier

## Finishing Cranes in the room

- (2) 6 Ton
- (2) 3 Ton
- (1) 1 - 1/2 Ton
- (2) 1/2 Ton

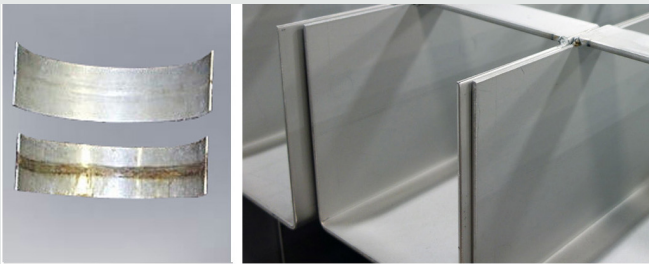
# PASSIVATION & PICKLING SERVICES



## Federal Spec A-967

**Passivation** is the removal of excess iron or iron compounds from the surface of stainless steel by means of a (nitric or citric) chemical, acid-based solutions.

- Resist corrosion, passivation is a best practice for stainless finishing
- Passivation does not change the appearance of material



## Federal Spec A-380

**Pickle Passivation** is the immersion of metal in a pickling bath or coating with nitric-hydrofluoric acid.

- White, matte finish
- Resist corrosion at a higher level than passivation due to removal of metallic contamination and heat treating scales in the process.
- Improve cleanability of stainless material by removing excess iron contamination resulting in a smoother surface for sanitation
- Tank 1 - 7.8' W x 5.9' H x 5.9' D
- Tank 2 - 4' W x 4' H x 4' D
- Tank 3 - 20' W x 7' H x 5.4' D



## Contact

David Foulkes  
920.356.7345

david.foulkes@apachestainless.com

*An Employee-Owned Company*